



# **Sacred Heart Catholic Primary School and Nursery**

**Meet the Teacher  
Year 5**

# Meet the Staff

Miss Rice  
Year 5 Class Teacher

Miss M Vincent  
Year 5 Class Teacher

Miss Boyd  
Year 5 Teaching Assistant

Miss Barret  
Year 5 Teaching Assistant

Thank you for coming to find out more about what happens in Year 5 and what you can do at home to support this.

Please follow us on twitter- [@SacredHeartL7](https://twitter.com/SacredHeartL7)



# Expectations

- At Sacred Heart we have high standards of behaviour. All children are expected to behave well and with kindness, both inside and outside of the classroom.
- Uniform is a key area to ensuring pupils are ready and settled for the day. Full uniform must be worn everyday and **must** be labelled with your child's name.
- Classroom rules are discussed, set and agreed with each class at the beginning of the year so that the children are clear of the expectations.
- Relevant consequences are given when behaviour has not been positive. We have a three warning system which has appropriate consequences for actions.

Parents will be spoken to if necessary about their child's behaviour in order to support a positive attitude to their learning.

- Class dojo's, positive praise, certificates and stickers are all used to promote and encourage positive behaviour in school. We use a secret student system.



# Rewards

- The children have the opportunity to earn Dojo points based on their actions, manners, good citizenship and efforts with their classwork.
- The points can be redeemed against rewards from the 'Dojo Shop' – rewards include: sitting next to a friend for the day, game time or buying a toy/activity.
- Pupils may be selected for 'Star of the Week' or for a 'Gospel Award' as they have stood out and been recognised by the staff and pupils in school as being a good role model for others.
- We have a 'secret student' each day that is monitored throughout the day to check for goof behaviour, attitude to work, and other qualities. If they are a good role model, then they receive dojos and a prize.
- Presentation awards will be given out each day for the best presented, or improved, work.



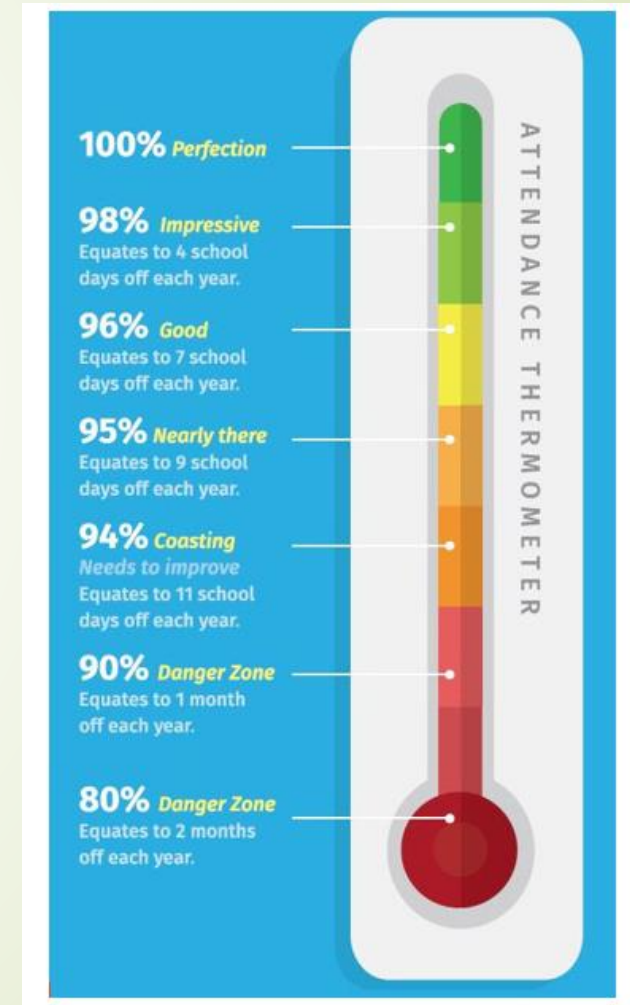
# Attendance and Punctuality

It is vital that your child is in school each day on time, in order for them not to miss out on vital parts of their learning.

The gates into school open at **8.45am** and lessons begin promptly at **9.00am**.

Guided reading is the first lesson of the day so is integral that your child is on time. Guided reading will improve your child's reading, will which ensure their development across the curriculum.

Being in school and being on time are major factors in minimising children's anxieties. Good attendance and punctuality improves pupils' concentration whilst in school as they are prepared and familiar with the routine.



# Attendance and Punctuality



## As a parent or carer you can help by:

- ensuring your child understands the importance of excellent attendance and punctuality
- taking an interest in their education – asking about school work and encourage them to get involved in school activities
- discussing any problems they may have at school and inform their class teacher to pass on concerns quickly
- not allowing them take time off school for minor ailments – particularly those which would not prevent you from going to work
- arranging appointments after school hours, at weekends or during school holidays will help to prevent disruption to your child's education and to the school
- being open and willing to work with us to improve your child's attendance



## As a pupil, you can improve your attendance by:

- trying hard every morning to get up and get to school, unless you are really unwell
- getting an early night. Feeling tired in the morning can make getting to school harder.
- make sure you get to school on time every day
- speaking to a trusted adult about the reasons why you might not want to come to school

# Some important reminders...

- Sleep is an important part of learning; our brain functions best as an adult on 8 hours of sleep, and we need to make it back if we ever do not get those 8 hours. For children, that is 8-10 hours each day un-interrupted sleep. That is when their brains are most switched on.
- Un-interrupted sleep means not having access to devices too! They interrupt our brains sleep cycle.
- Appropriate material for children should be a huge priority- games, youtube videos, apps, are all places where children can access inappropriate material and speak to people older than themselves. Some of this media in games like Roblox doesn't get an age rating, so we need to work together to make sure that your children are safe! If you've got any questions about parental blocks and check, please let me know.
- Children don't have the emotional regulation to deal with these issues!



# What's New in Year 5?

- Year 5 is making a transition into Upper Key Stage 2, and there is a focus on building independence inside and outside of school. They are responsible for their own learning, for getting their own resources, reading, and homework.
- We examine higher order thinking and mastery questions, promoting why and how the world around us works, using our knowledge, concepts, skills and problem solving strategies to discover the answers.
- Children are exposed to new concepts- decimal division and multiplication, justification of answers, fronted adverbials, computer aided design, and photography.
- We build upon our previous knowledge and begin to apply it to the broader curriculum. In order to solve a range of problems, apply new thinking and trial a variety of methods, children will need to build their resilience and be determined, curious learners.
- Learning links will provide the pupils with a secure understanding ready to make a confident transition into Year 6.



# Homework

- Homework will be given weekly on Monday and MUST be returned the following Monday. Children will miss their break time if this is not completed.
- Weekly homework will consist of:
  - **Spellings** - related to the teaching, national expectations, and children's progress.
  - **Reading** -Your child should read four/five times per week – please complete their reading diary/record each time with a brief comment. Children can read, and should be, reading independently outside of this.
  - **TTRS** – Children should log on to Times Tables Rock Stars daily to ensure that they are practising their knowledge but also to ensure their recall is becoming quicker
- **Topic** homework will be set as a project over the course of a half term.



# Reading

Reading is one of the most important things you will do with your child.

Reading allows access to the rest of the curriculum, and the rest of the world.

Reading is not just reading words quickly, but understanding what you are reading.

There are many reading books in school, but sharing stories your child enjoys and can read fluently is just as important.

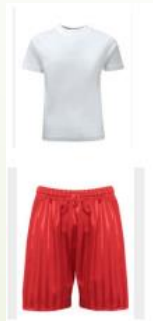
Also, please continue to read to your child as it is vital that they hear good modelling. They need to hear your change in tone, speed, volume and listen to the pronunciation and explanation of new vocabulary.



# Physical Education

- We are promoting physical activity as much as we can throughout the school day. We will be participating in the Daily Mile and there are playground activities at break and lunchtime.
- Each class will take part in a wide variety of sports within their Physical Education lessons, such as: gymnastics, football, tennis, athletics, and swimming.
- We will be running a selection of extra-curricular clubs throughout the year – look out for letters sent home.
- Please send your child into school in their PE kit every Tuesday for their PE lesson. The kit is as follows:

Please ensure that the correct PE kit is worn – White T-shirt, black/grey or red shorts/leggings



Plain black pumps or trainers only for PE

# Communication

- Information is shared with parents through our School Website, text messages, E-mail and letters sent home.
- If you would like to speak to a member of staff, please make an appointment via the school office.
- Twitter is used to share and celebrate children's work and achievements in each class. It is a great way for you to see what your child has been doing in school. Please follow us on Twitter - @SacredheartL7



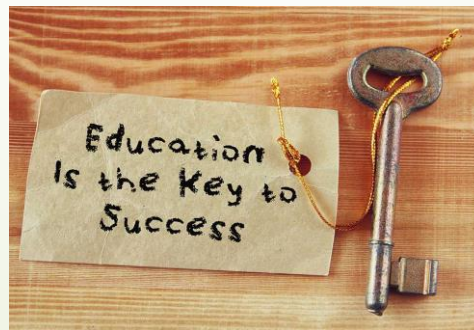
# Curriculum

## Maths

Within Maths, we will be building on our basic skills of place value (focussing on tens and units) and addition and subtraction. We will cover negative numbers and numbers up to and including a million, and how to partition and use these large numbers. We will also use column addition and subtraction with these large numbers, and use a variety of mental maths. Children will also benefit from doing their times tables everyday.

## English

Within English, our text will be The Proudest Blue. We will reinforce the year 4 English standards, as well as build up our writing stamina and skill. We will introduce new concepts such as varied sentence structure, fronted adverbials, varied verb form, and other new concepts.



# Religious Education

Come and See is a Catholic Primary Religious Education programme for Foundation and Key stages 1 and 2. The programme of study, written by a group of experienced diocesan advisors has been warmly received by staff and pupils. The child friendly material provided within Come and See allows children to explore the teachings of the Catholic church through the use of age appropriate resources and activities.

Throughout the year, we also learn about other faiths and explore similarities and differences to the Catholic religion. We enjoy giving children the opportunity to share their experiences during these sessions.

Please see our RE policy on the website for more information.



Come and See

# RSHE Curriculum

Sacred Heart Catholic Primary School and Nursery aims to provide a suitable programme that follows the statutory need to include RSHE into their curriculum from September 2020 which meets the ethos of its Catholic identity and mission.

The purpose of this Relationship, Sex and Health Education (RSHE) policy is to set out the ways in which the school's provision supports pupils through their spiritual, moral, social, emotional and physical development, and prepares them for the opportunities, responsibilities and experiences of life growing up in today's world.

It is an age appropriate curriculum and children are supported in their learnings based on well researched programmes of study and texts that have been sanctioned by the Archdiocese.



# Gospel Values

- The Social, Spiritual, Moral and Cultural development of pupils is important to us and one way in which we foster this is by promoting our 'Gospel Values' alongside our British Values. Our policies, procedures and daily teachings are underpinned by these values.
- Our weekly Gospel assembly, whole school, key stage and class collective worship are based around the Gospel Values, which forms an important focus in the daily life of our school.
- Courage, creativity, thankfulness, responsibility, compassion, peace, service, justice, trust, hope, love, forgiveness, friendship, humility, generosity and reverence and respect are our key Gospel values.





# Assessment

- Teachers and Teaching Assistants will constantly be monitoring children's progress throughout their lessons and offering support on how to improve.
- There will be NFER tests carried out at the end of each term to monitor application of skills and to inform our future planning.
- Teacher Assessment is used to monitor the wider curriculum.



# Thanks

Thank you for attending and we give thanks to you for your support in developing your child's education and nurturing them to become positive, curious, independent and happy, young people.

